

## HIGHLIGHTS

50-50 joint venture between Carlin Gold Corporation and Constantine Metal Resources moved quickly to establish a major land position in Yukon's emerging Carlin-style gold district - Yukon's most exciting new exploration play.

A science-based approach was taken, with claims staked specifically to cover tracts of ground with geochemical and geological elements characteristic of Carlin-type gold systems.

With a large property position, including numerous RGS silt anomalies exceeding the 95th percentile, opportunity for discovery is high.

Vastly underexplored district.

## MAJOR LAND POSITION 1000 SQUARE KILOMETERS

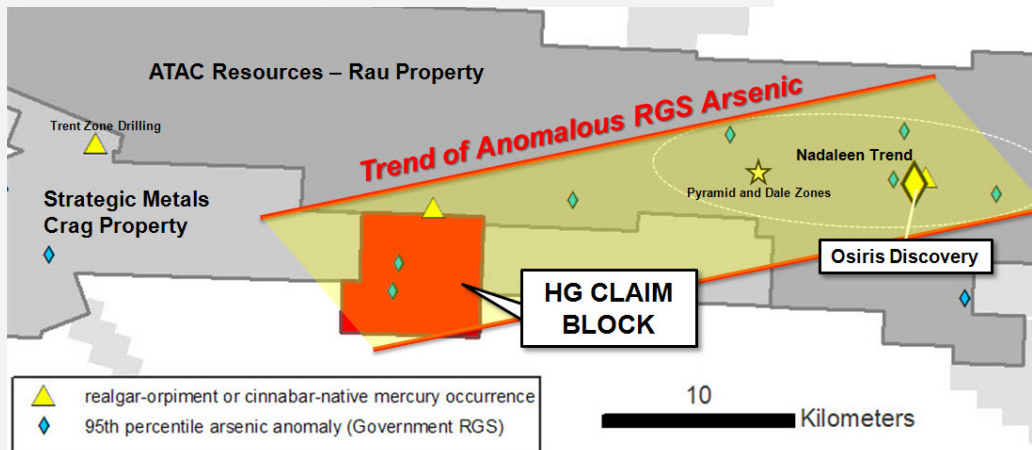
### \$1.2 MILLION 2011 EXPLORATION PROGRAM

First-pass coverage of 7,000 samples is being executed by a fifteen person field crew consisting of geologists, prospectors and soil samplers.

Program includes both regional and target specific stream silt sampling, contour and ridge soil sampling, and prospecting.

Field data is guiding follow-up work on multiple target areas that includes infill sampling, gridding and mapping with the objective of rapidly establishing quality drill targets.

Soil and silt samples are pre-screened with an on-site XRF geochemical analyzer prior to submission to assay laboratory, allowing for 'real time' decisions in the field.



## HG BLOCK

Similar tenor regional silt pathfinder anomalies (As and Hg) as Osiris discovery.

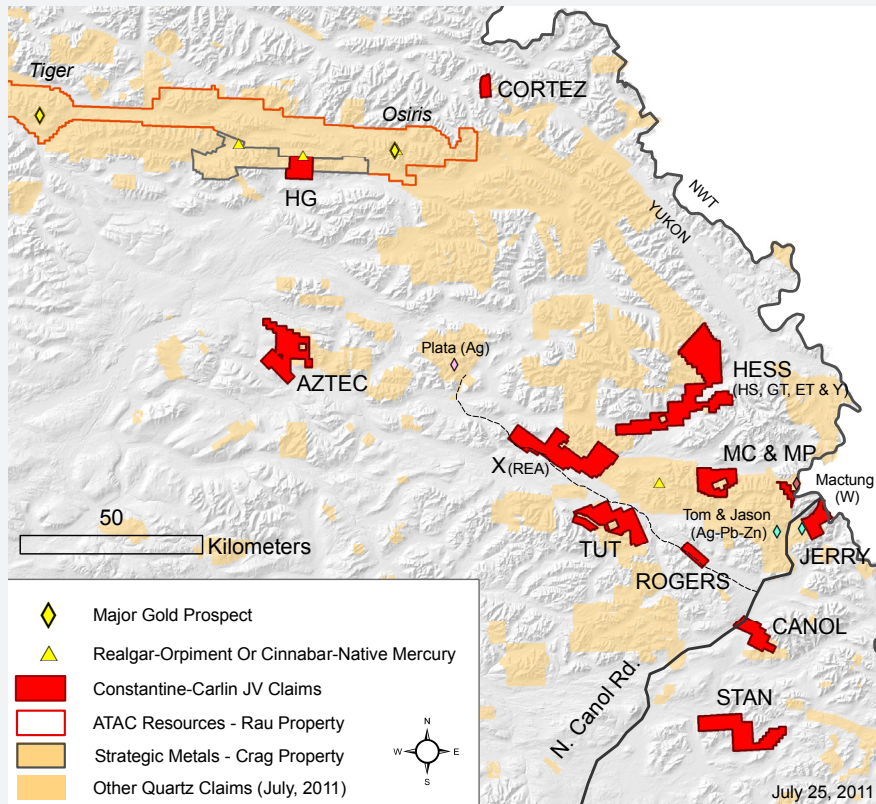
The 208 claim HG block (42 sq km) borders ATAC Resources Ltd.'s Rau Property, where Carlin-type gold mineralization has recently been discovered.

The claims are located approximately mid-distance between the Osiris discovery and a realgar-orpiment occurrence that was recently announced by Strategic Metals on its Crag property.

# PROPERTY DESCRIPTIONS

**HESS RIVER AREA:** Includes the Tut, X, Rea, Y and Hess claim blocks, totalling 2,595 claims (539 sq km), that cover the southeast projection of the Rackla Gold setting. Claims cover drainages anomalous in gold, and Carlin-type pathfinder elements arsenic, mercury, and antimony that are similar in tenor to Regional Geochemical Silt (RGS) samples that drain Atac Resources' Osiris discovery. Claims also cover some of the highest RGS gold in silt anomalies in the entire Selwyn Basin (includes 5th and 7th highest gold anomalies of the more than 8000 samples collected within the Basin). Portions of property are located peripheral to known Tombstone Suite intrusive-related gold mineralization and cover both a proximal and distal setting with respect to the intrusions.

**MAC PASS GROUP:** The Mac Pass group includes 339 MC claims and 74 MP claims (86 sq km total). The MC claims are located in an extremely structurally complex area where previous base metal exploration encountered highly anomalous concentrations of arsenic in soil and silt samples, which were not assayed for gold. These claims are located 10 kilometers east of the Brick gold-mineralized realgar-orpiment occurrence. The 74 MP claims are adjacent to the MacTung deposit which contains a reserve of 8.5 Mt grading 1.082% Wo. Some Carlin-type gold deposits in Nevada are adjacent to tungsten-bearing skarn deposits (e.g. Getchell).



**CANOL PROPERTIES:** Four properties totaling 1,128 claims (234 sq km) have been staked to cover environments considered prospective for Carlin-type gold mineralization. These include the Canol, Stan, Jerry and Rogers properties. In addition to its potential for Carlin-type gold mineralization, the Jerry claims are located adjacent to HudBay Minerals Tom silver-lead-zinc resource (18.53 mt @ 36.1 g/t Ag, 6.7% Zn, 3.5% Pb). All four properties are located either adjacent to or within a short distance of the Canol Road.

**AZTEC PROPERTY:** The 544 claim Aztec property (113 sq km) covers a large area of strongly anomalous gold and arsenic defined by regional government stream silt data, located within the Selwyn Basin approximately 60 kilometers south of the Osiris Discovery.

**HG CLAIMS:** The claim block is adjacent to a known cinnabar and native mercury occurrence; this is believed to be the only known mercury occurrence in the district. Mercury is commonly associated with Carlin-type gold deposits and there is a known spatial relationship between cinnabar (HgS) and some large Carlin-type gold deposits in Nevada. The claims cover drainages that contain elevated gold and are highly anomalous in the pathfinder elements arsenic and mercury.



**CARLIN GOLD**

**TSX.V: CGD**

**CARLIN GOLD CORPORATION**

[www.carlingold.com](http://www.carlingold.com)

[info@carlingold.com](mailto:info@carlingold.com)

Carlin Gold Corporation  
800 West Pender Street, Suite 320  
Vancouver, BC V6C 2V6

Tel 604-638-1402  
Fax 604-608-3878



**CONSTANTINE**  
metal resources ltd.

**TSX.V: CEM**

[www.constantinemetals.com](http://www.constantinemetals.com)

[info@constantinemetals.com](mailto:info@constantinemetals.com)

Constantine Metal Resources Ltd.  
800 West Pender Street, Suite 320  
Vancouver, BC V6C 2V6

Tel 604-629-2348  
Fax 604-608-3878

#### Investor Relations

R.E. (Bob) Jeffery  
250-335-2011  
[bob@constantinemetals.com](mailto:bob@constantinemetals.com)

Jim MacDonald  
Torrey Hills Capital  
858-456-7300  
[jm@sdthc.com](mailto:jm@sdthc.com)

## TECHNICAL TEAM

**J. Garfield MacVeigh, B.Sc.**  
Constantine Metal Resources  
President & CEO, Director

**K. Wayne Livingstone, B.Sc., M.Sc.**  
Carlin Gold Corporation  
President & CEO, Director

**Darwin Green, B.Sc., M.Sc., P.Geo**  
Constantine Metal Resources  
Vice President Exploration

**Robert D. Thomas, BA, MA, CPG**  
Carlin Gold Corporation  
Vice President Exploration, Director

**Collective 125 years experience in exploration and mining, including strong Carlin-type gold expertise and familiarity working in the North**

*Forward looking statements: This brochure contains certain "forward-looking information within the meaning of Canadian securities legislation and "forward-looking statements" within the meaning of the United States Private Securities Litigation Reform Act of 1995 (collectively "forward looking statements") concerning Constantine's plans for its properties, operations and other matters. Forward-looking statements include predictions, projections and forecasts and are often, but not always, identified by the use of words such as "seek", "anticipate", "believe", "plan", "estimate", "forecast", "expect", "potential", "project", "target", "schedule", "budget" and "intend" and statements that an event or result "may", "will", "should", "could" or "might" occur or be achieved and other similar expressions and includes the negatives thereof. All statements other than statements of historical fact, including, without limitation, statements regarding potential mineralization, the estimation of mineral resources, the realization of mineral resource estimates, interpretation of prior exploration and potential exploration results, the timing and success of exploration activities generally, the timing and results of future resource estimates, permitting time lines, metal prices and currency exchange rates, availability of capital to Constantine and its joint venture partner, government regulation of exploration operations, environmental risks, reclamation, title, statements with respect to the future price of gold and other metals, and future plans and objectives of Constantine are forward-looking statements that involve various risks and uncertainties. There can be no assurance that such statements will prove to be accurate and actual results and future events could differ materially from those anticipated in such statements. Forward-looking statements are based on a number of material factors and assumptions. Important factors that could cause actual results to differ materially from Constantine's expectations include actual exploration results, changes in project parameters as plans continue to be refined, results of future resource estimates, future metal prices, availability of capital and financing on acceptable terms to Constantine and its joint venture partner, general economic, market or business conditions, uninsured risks, regulatory changes, defects in title, availability of personnel, materials and equipment on a timely basis, accidents or equipment breakdowns, delays in receiving government approvals, unanticipated environmental impacts on operations and costs to remedy same, and other exploration or other risks detailed herein and from time to time in the filings made by the Company with securities regulators. Although the Company has attempted to identify important factors that could cause actual actions, events or results to differ from those described in forward-looking statements, there may be other factors that cause such actions, events or results to differ materially from those anticipated. There can be no assurance that forward-looking statements will prove to be accurate and accordingly readers are cautioned not to place undue reliance on forward-looking statements.*